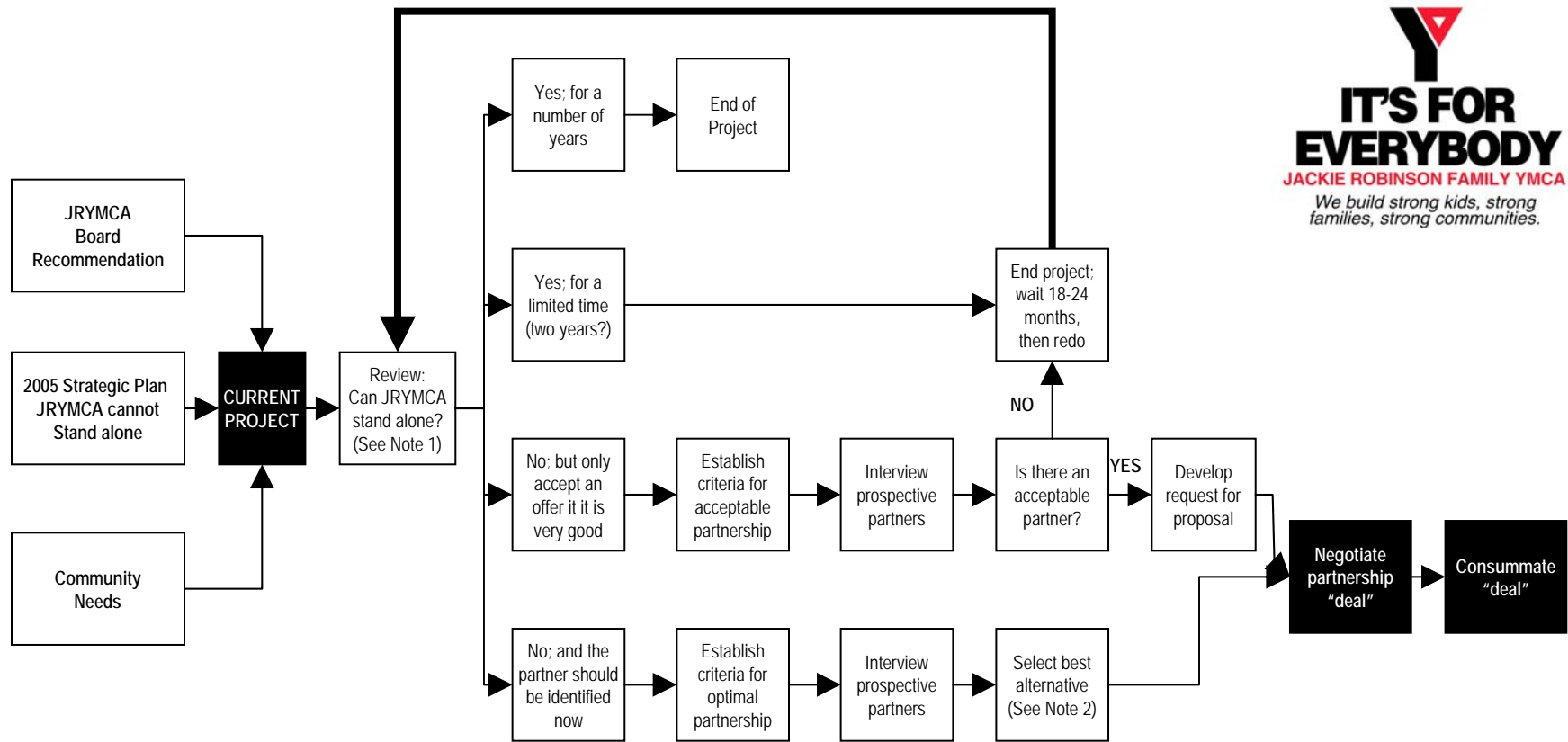


# LOGIC PATH FOR JACKIE ROBINSON FAMILY YMCA TASKFORCE ON ALLIANCES



**NOTE 1** "STAND ALONE" in this context is meant to reflect the current status of JRYMCA, including maintenance of all its current affiliations.

**NOTE 2** This chart does not reflect the steps between the recommendation of the Task Force on Alliances, and the JRYMCA Strategic Planning Committee, and approval of the Board of Mangers.

# Criteria for Evaluation of JRYMCA Alliance Partners

CRITERIA	DEFINITION
•Financial Strength	Financially stable from operations, available capital.
•Quality + Efficiency = Value	Demonstrated high quality and efficient operations resulting in perceived value to the youth and families in our community.
•Access to Youth and Families	Serving existing covered lives and provides access to new covered lives.
•Geographic Complementarity	The affiliation either expands JRYMCA's market reach and/or intensifies market penetration in JRYMCA's existing service area; the affiliation results in, or leads to a defensible niche.
•Community Service	Focus on meeting the locally identified community needs; commitment to maintaining important community services, such as access youth and families and continued operation of existing programs.
•Corporate Culture	Compatible values and philosophy to JRYMCA and its professional staff.
•Available Information System	Network has or is committed to developing the information systems and methods to manage youth and families under supervision.
•Track Record	Perception among community and professionals, local reputation.
•Management Strength	Flexibility, adaptability, speed or reaction in the service area.
•Potential Partner's Vision	Organization's or network's view of its future in context of JRYMCA's Strategic Plan of January 2005.
•Role for the JRYMCA	JRYMCA continues to exist as a youth and family service provider; complementary technology services and facilities; partner is willing to share control.
•Role for JRYMCA Specialists	Network allows YMCA specialists to continue to practice their specialty.
•Role for the JRYMCA Staff & Volunteers	Network supports the aspirations or the YMCA Staff & Volunteer's leadership role in the network.